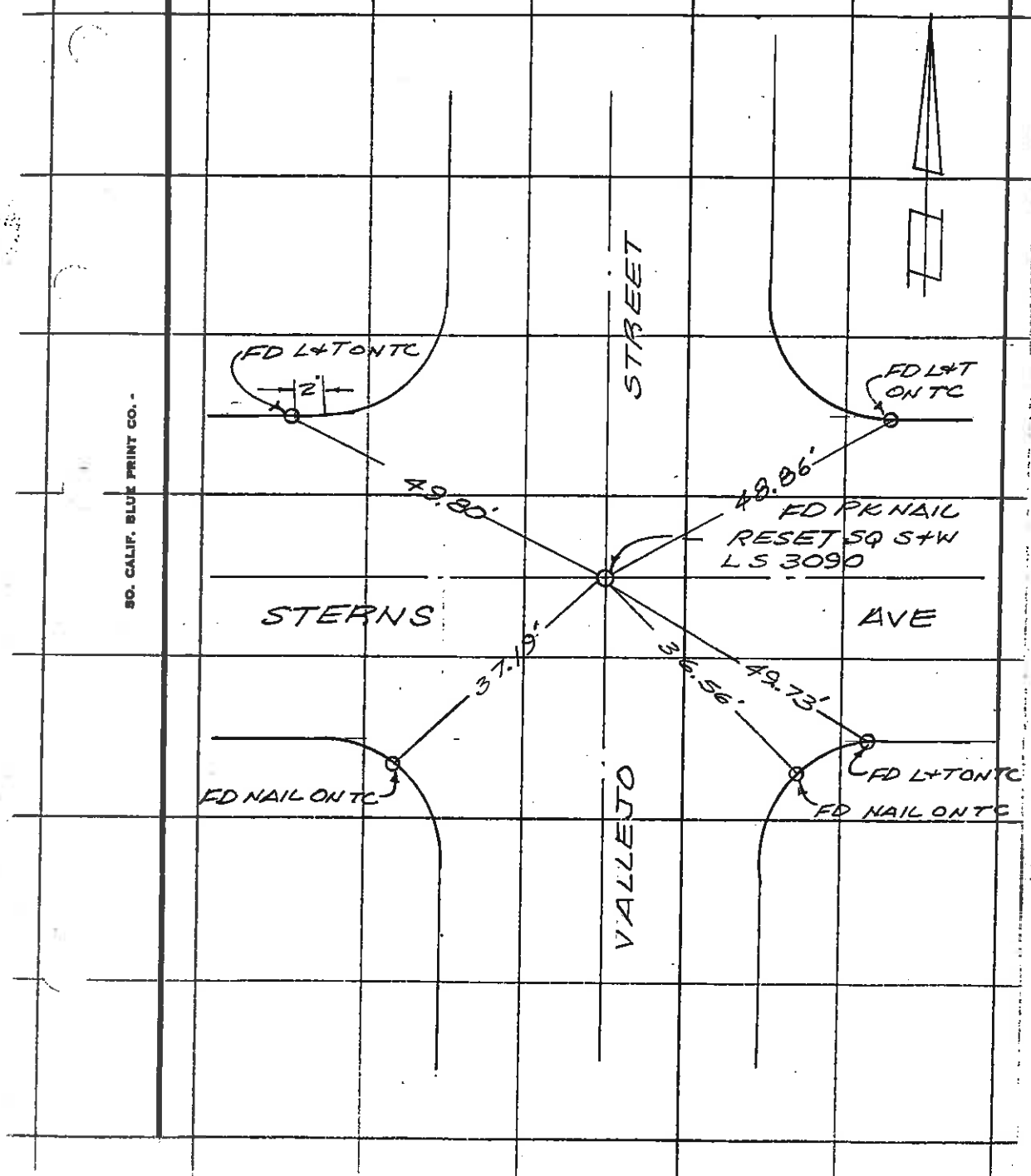


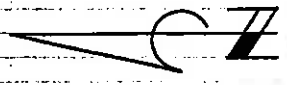
SURVEY OF STERNS AV-VALLEJO ST. F. B. Pg. _____

SURVEY BY ROBERT WADA + ASSOC TR. No. _____

DATE 7-18-88 JN 1722

SO. CALIF. BLUE PRINT CO. -





AVE

VALENCIA ST.

COLLEGE ST.

FRANCIS

ST.

SET BT. SPK. & WASHER 21.63.06

± 1' E'LY OF B.C.R.

± 1' W'LY OF B.C.R.

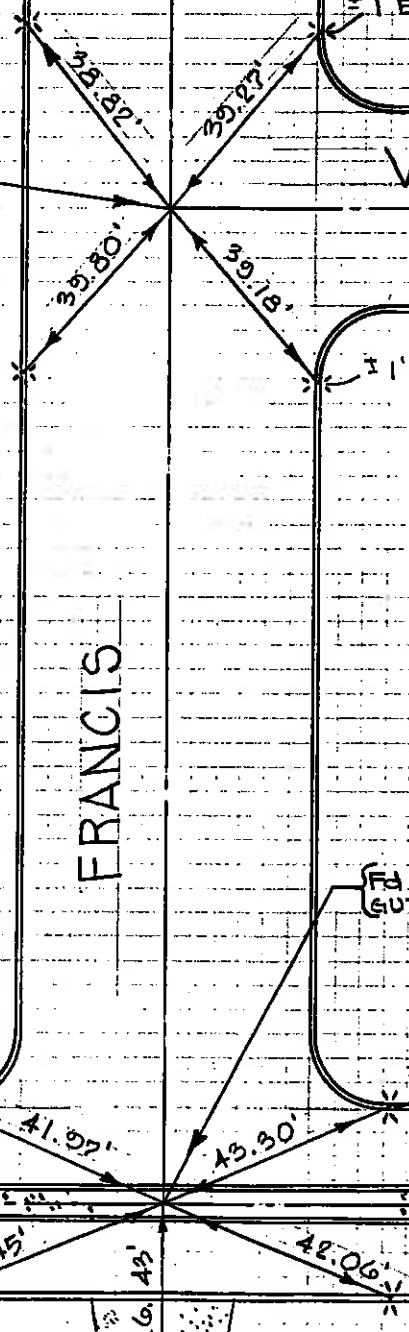
FD. CHIS * + " IN CONC. GUTT. 0+00 E'LY

± 1' NO. OF B.C.R.

± 1' SO. OF B.C.R.

SET IN CONC. WK. ON E PROD.

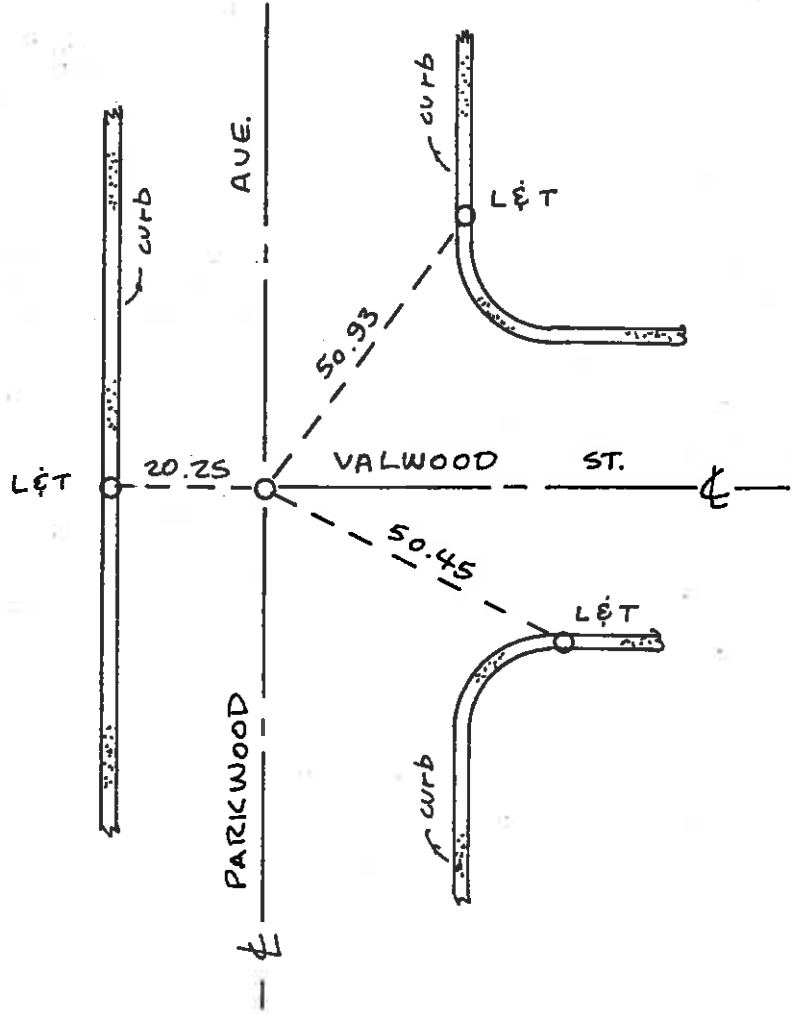
* = SET L & T



JUDKINS, AGUILAR
DATE 7-21-81
ENGINEERING, INC.

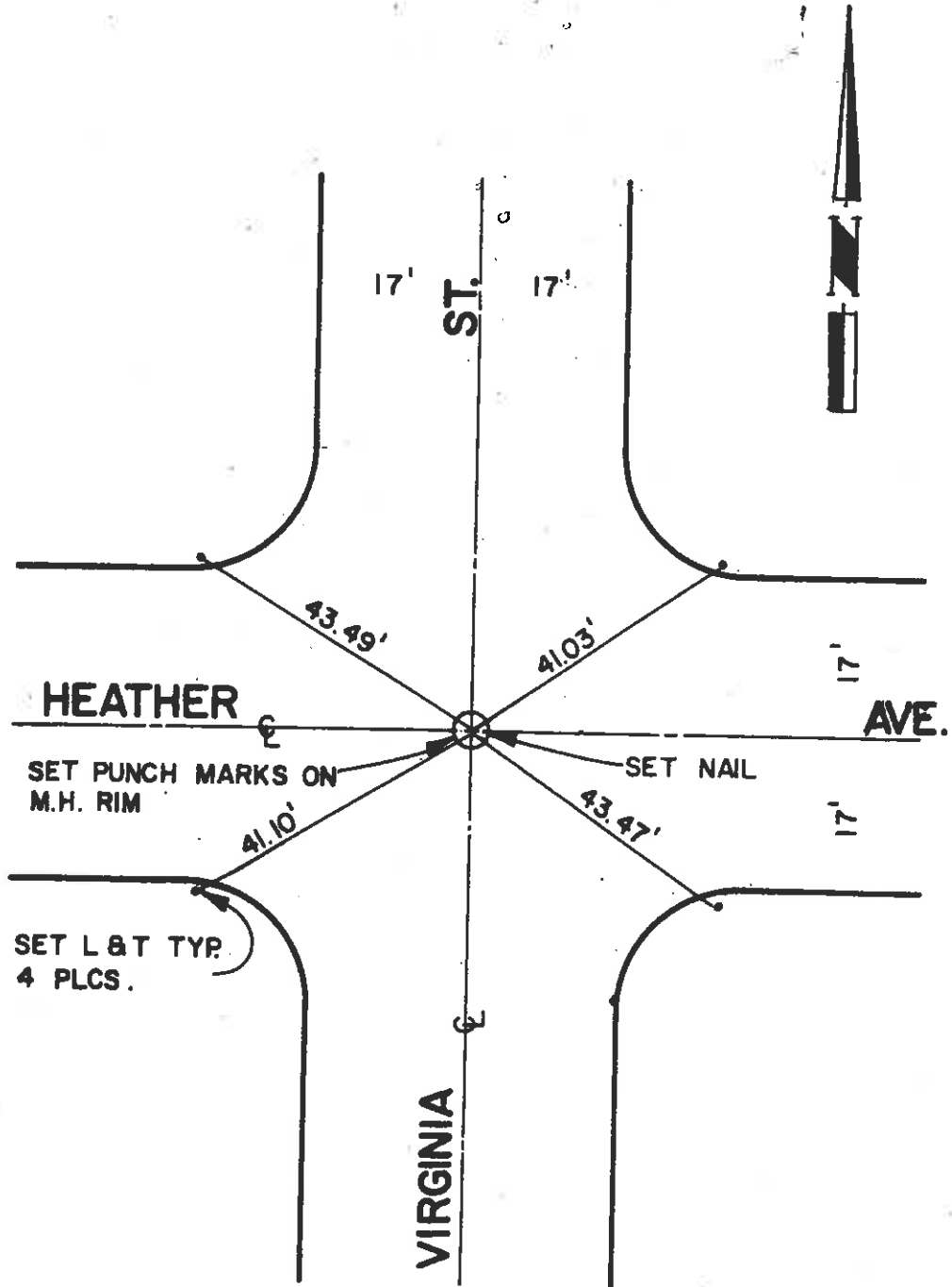
WILSON-BRYANT & ASSOC.
143 S. BREA BLVD.
BREA, CA 92621 714/990-0123

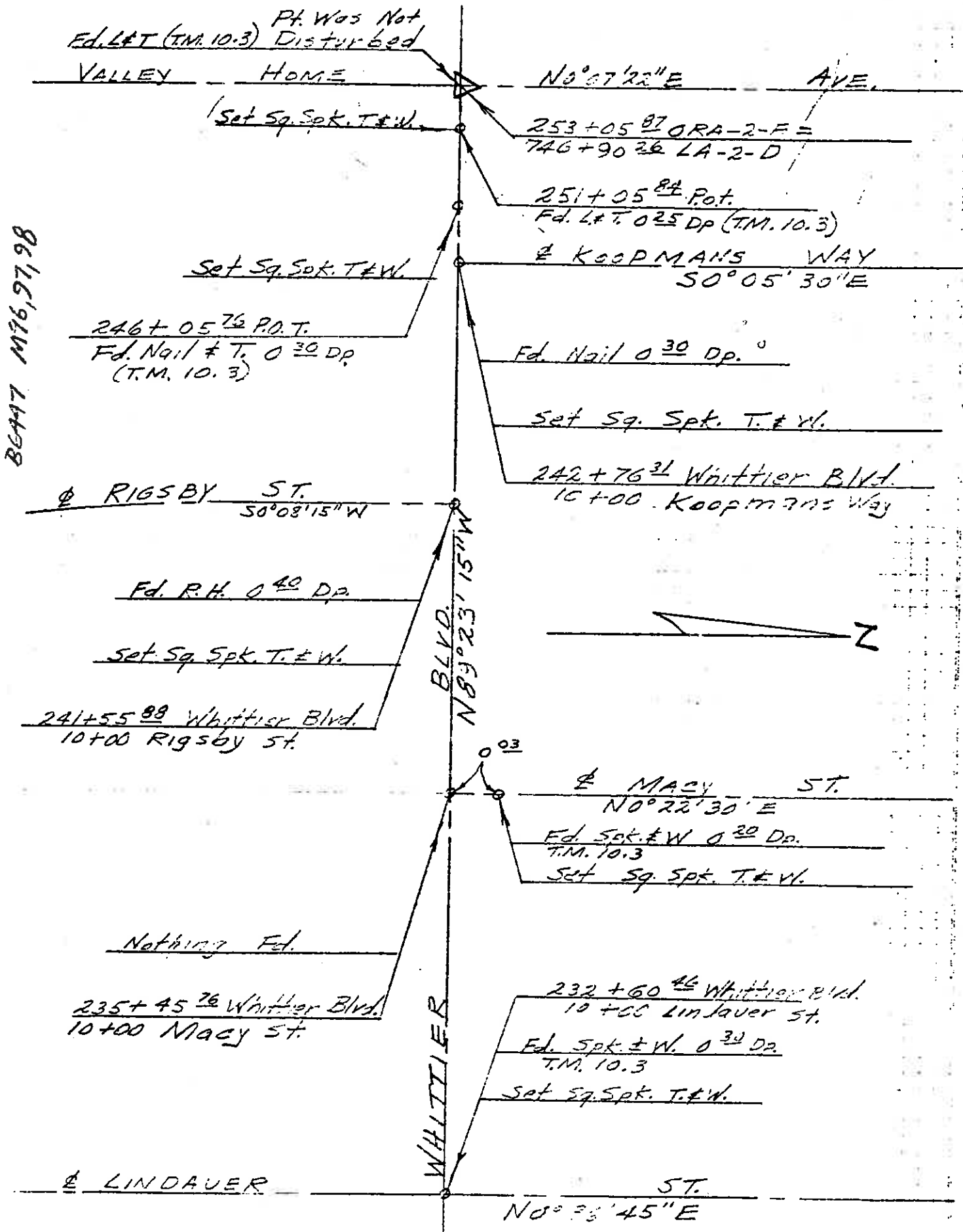
CITY OF LA HABRA



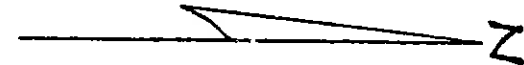
CITY OF LA HABRA
VIRGINIA ST. & HEATHER AVE.

WILSON - BRYANT & ASSOCIATES
143 S BREA BLVD.
BREA, CALIF 92621





BEAM 7 M76, 97, 98



See top of pg 12

(4)

6-24-70
R.L. ADAMS & PTY
G.A. MANSON

TIES AT
WHITTIER BLVD.
AND VALLEY HOME AVE.

084 72 9.2/11.9
07212-260231
SUR. REQ # 70-217

