

SURVEY OF ROSCOE ST - McCART AVE F. B. Pg.

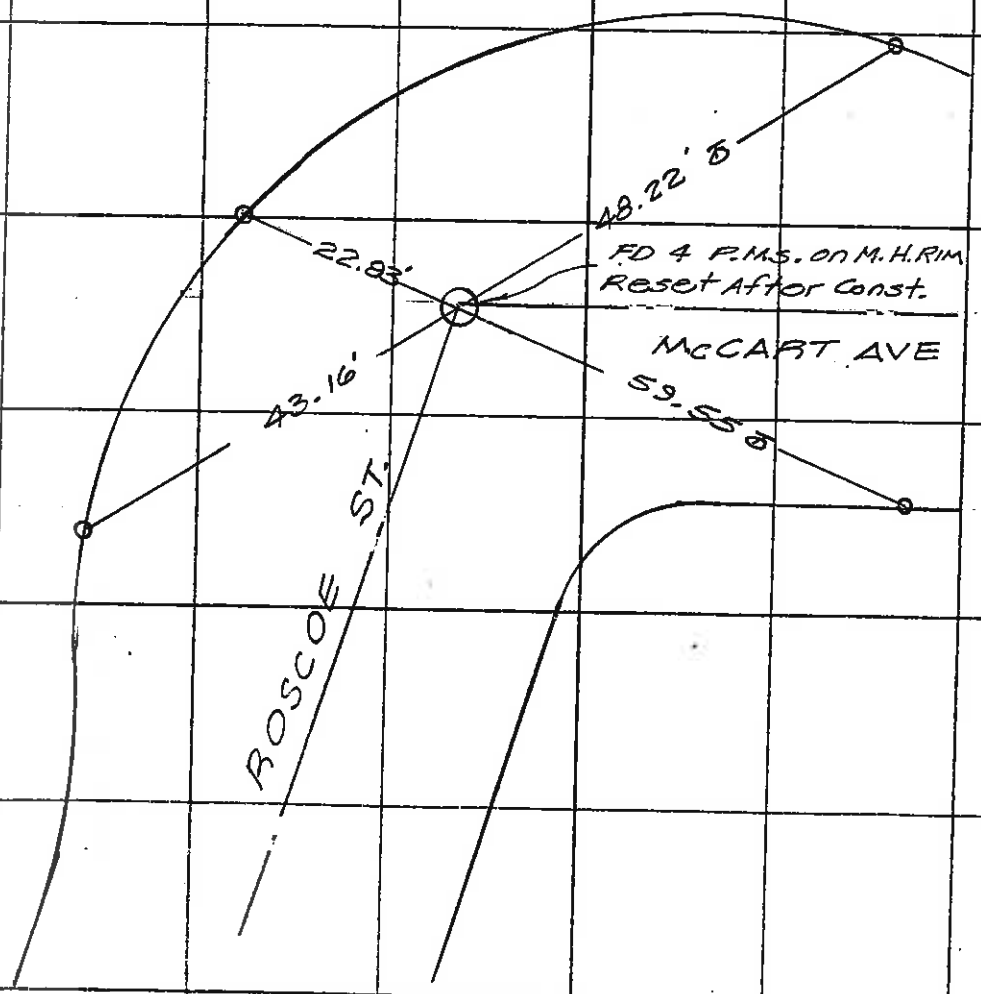
SURVEY BY ROBERT WADA & ASSOC. TR. No.

DATE 7-18-88 TN 1722

O = SET L&T ON T.C.



SO. CALIF. BLUE PRINT CO. -



FROM
M.M-E-3

IDENTICAL



20+40.49

19+79.10

LA HABRA

BLVD.

ST. 20+40.49

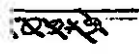
30'

MCPHERSON 19+79.10

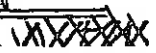
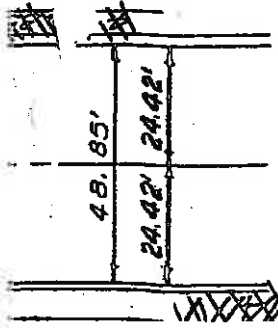
B.M. on Curb
Elev. 312.40

48.85'

24.42' 24.42'



101966148A



①

64

ENTICAL

LA HABRA

BLVD.

22+81.28
MCPHERSON

23+06.99
23+06.96
Set P.K.
93' 80"
1735' 1645'

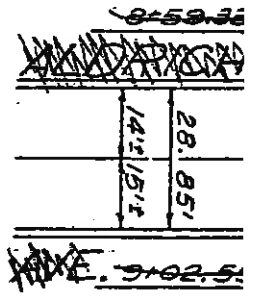
ST.

23+31.90

This P.K. not meant
to be on E. but on
Prod of "A" and Nail

89° 56' Mea.
This Angle Measured
from Transit line to Cross

0.07'
Pd Nail
23+07.02
2705'
Pd Nail



FROM
M.M-E-3



CITY OF LA HABRA - ENGINEERING DEPT
 SURVEY TO RE-ESTABLISH CENTER LINES
 OF STREETS WITHIN TRACT NO. 362 AND
 TRACT NO. 583 IN CITY OF LA HABRA.
 MARCH 1951
 SCALE 1"=40' James O. Bennett
 45.2408
 1/4" iron pipes with concrete plug and nail set 10" under
 at all points of intersection unless otherwise noted
 Basis of Bearings & of PACIFIC ELECTRIC TRACKS (S. 89°
 56' 40" W) as shown on map of Tract No. 1385 MM 43-9

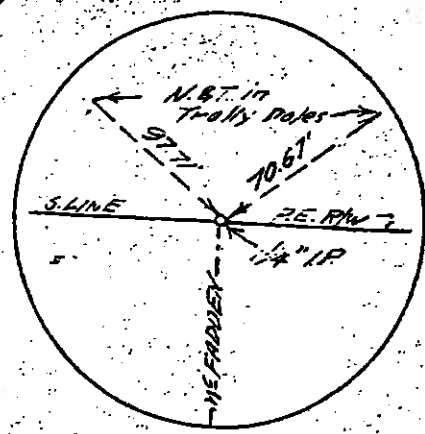


PACIFIC-ELECTRIC RAILWAY Φ TRACK
 S. 89°56'40" W 1321.46'

Set Nail

0+00 20' 30' 0+00

McFADDEN
 150.02
 AVENUE



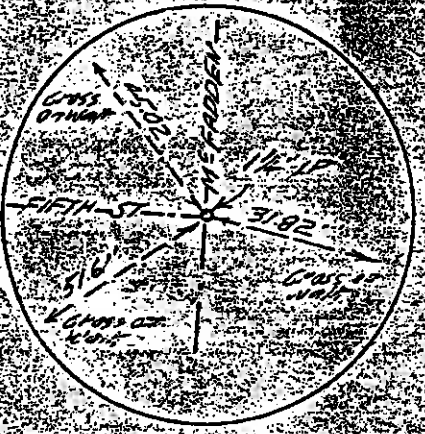
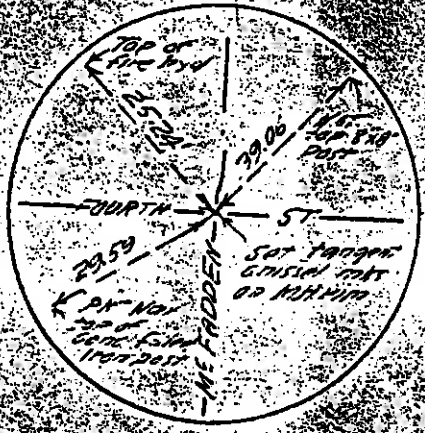
AS PER DWG. NO.
 E-44

5+40.73

6+90.73

1+20.02

(4)



20.0841

67.90.73

67.109 N. 02 50.0 W 601.49

300.04

67.40.73

67.40.73

4+30.06

FIFTH STREET

20 20

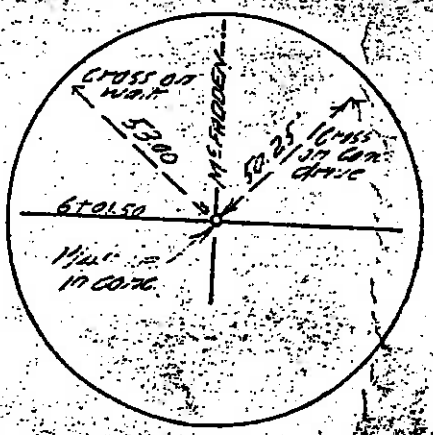
4+70.06

67.40.73

151.44'

ME FADDEN

AS PER DWG - NO. E-44



Fd. remains of old 4x4 R/W state S.E. cor. lot 1, Tr. No. 352 67.01.50

20 30

5