

**TICE ENGINEERING SERVICES**

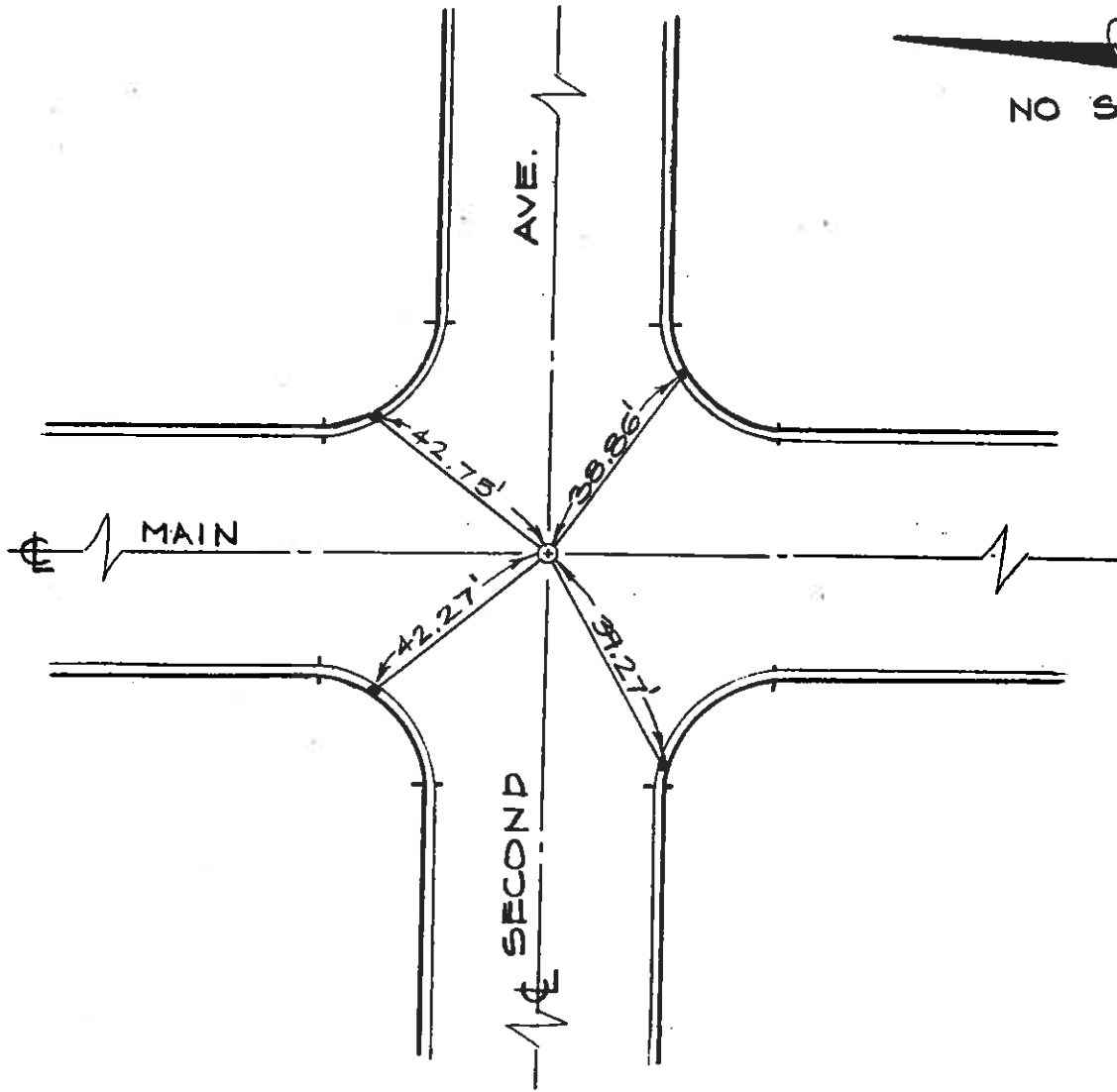
17611 Yorba Linda Blvd.  
Yorba Linda, California 92686

JOB NO. 861005 SHT. 3 OF 4

PROJECT 2<sup>ND</sup> AVE, LA HABRA

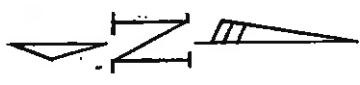
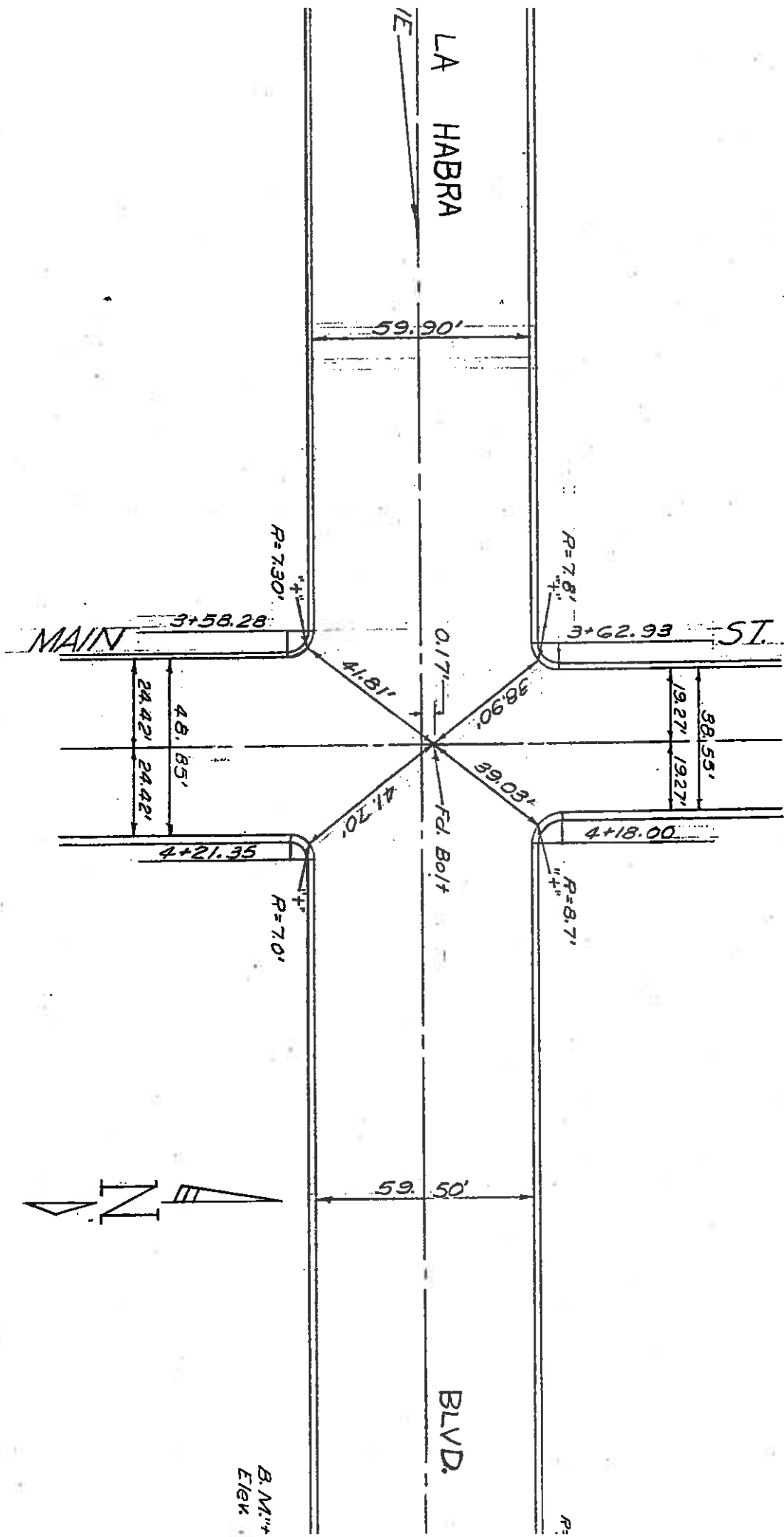
DATE 3/10/87 BY D.W.

**CITY OF LA HABRA CENTERLINE SECOND AVENUE TIES**



  
NO SCALE

- SET 6" SPIKE WITH WASHER "L.S. 5196"
- SET LEAD AND BRASS NAIL IN TOP OF CURB UNLESS NOTED.

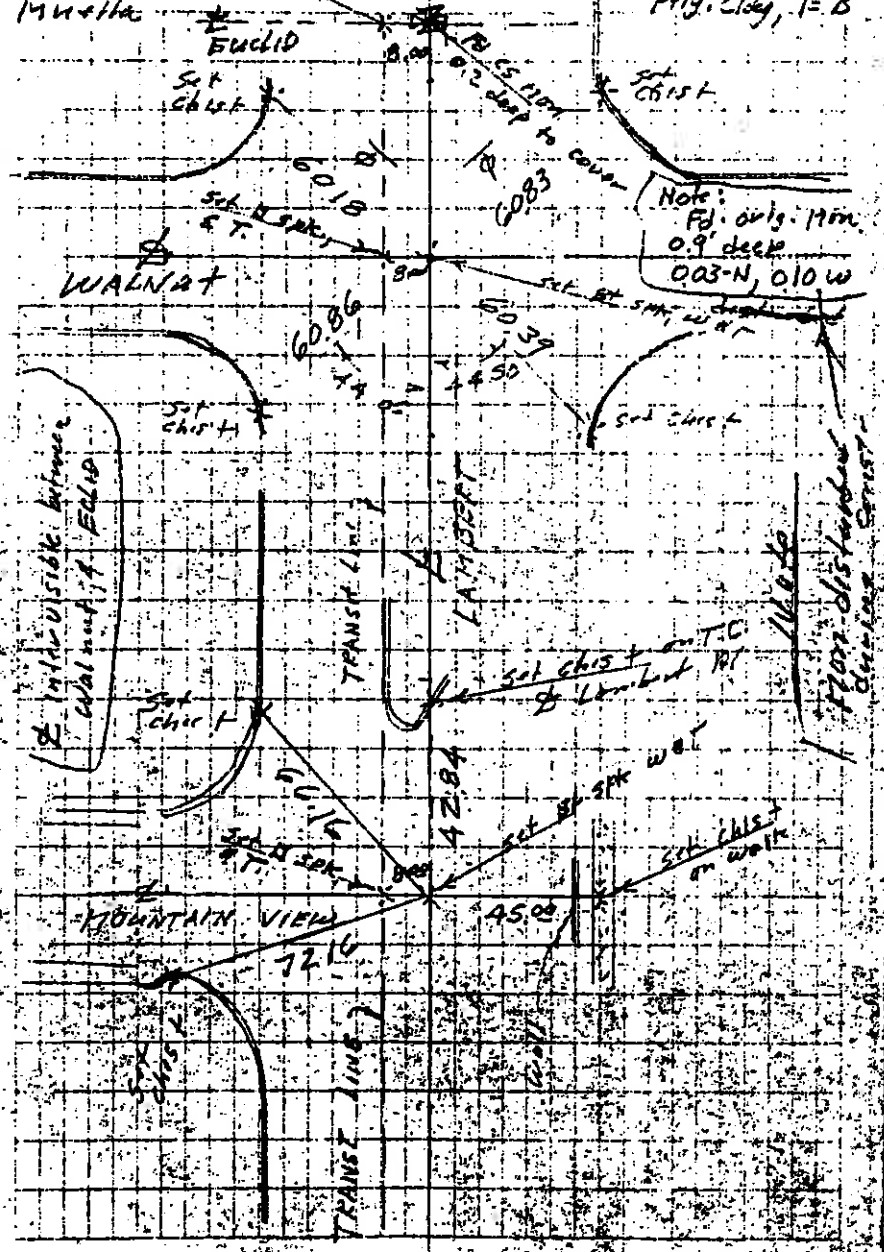


B.M. +  
Elev

FROM  
M.M-E-3

Job #3493  
FINAL & TIES  
Holmerson  
Muelle

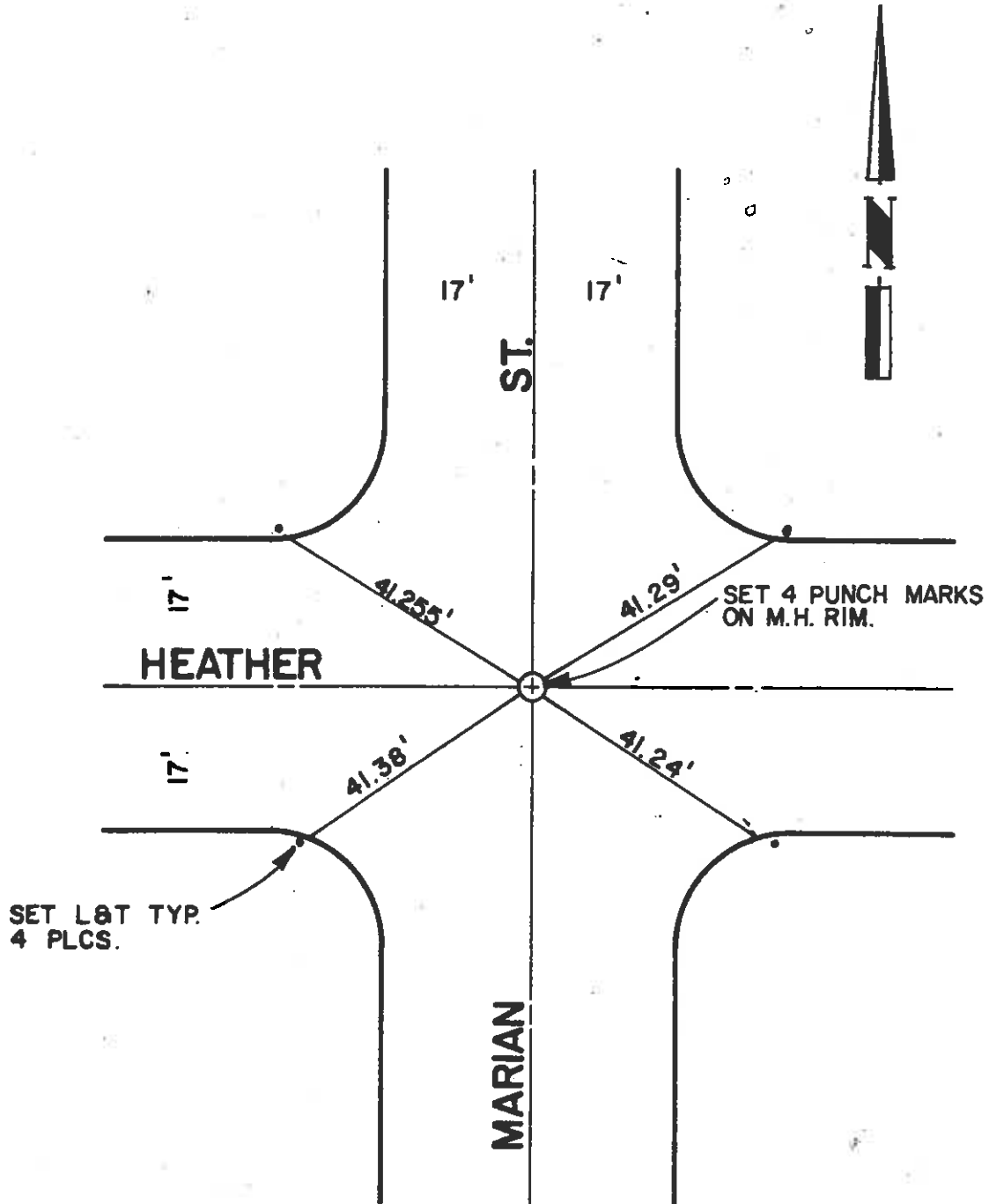
72  
APRIL 5, 1972  
Ply. Cldy, T-B



WILSON - BRYANT & ASSOCIATES

143 S. BREA BLVD  
BREA, CALIF. 92601

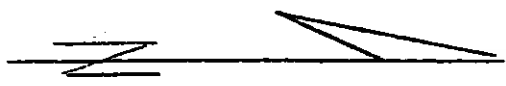
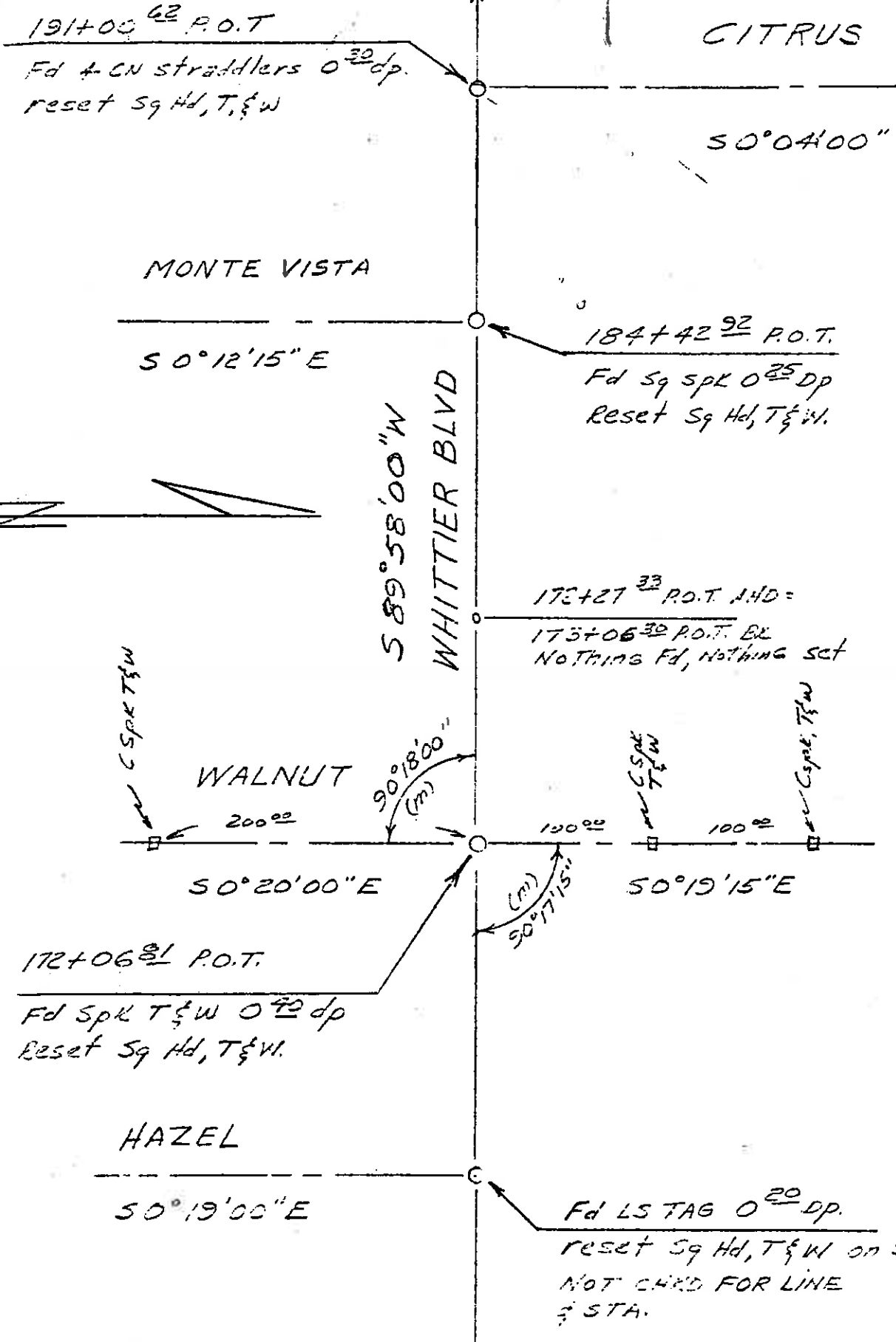
# CITY OF LA HABRA MARIAN ST. & HEATHER AVE.



CUTTO M74, 45, 274

TO IDAHO

See bottom pg. 11



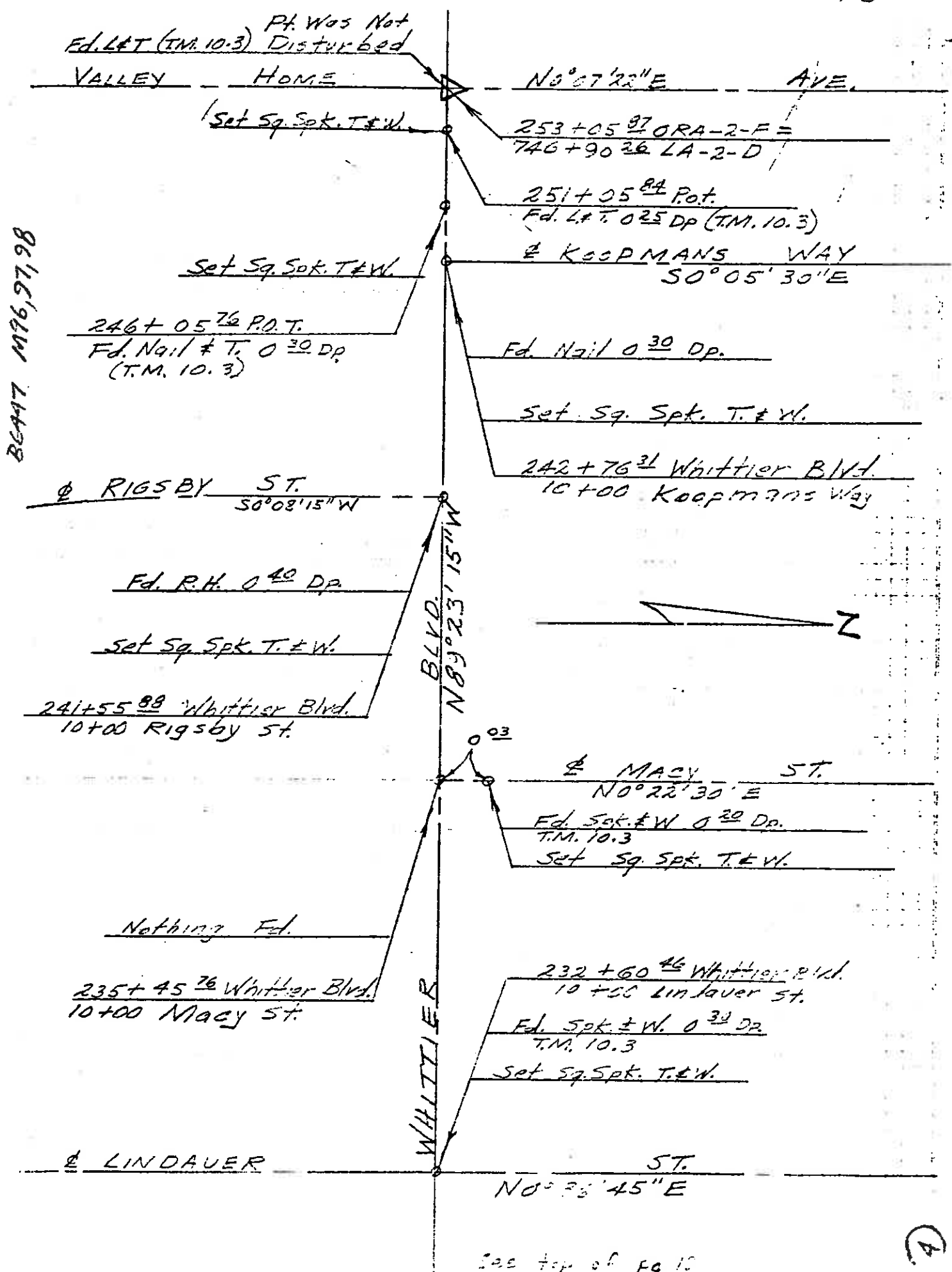
VII

4/60

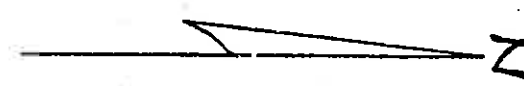
Resnick & Fry

4

See top of page



BEAAT M76,97,98



WHITTIER BLVD.  $N 89^{\circ} 23' 15'' W$

See top of pg 10

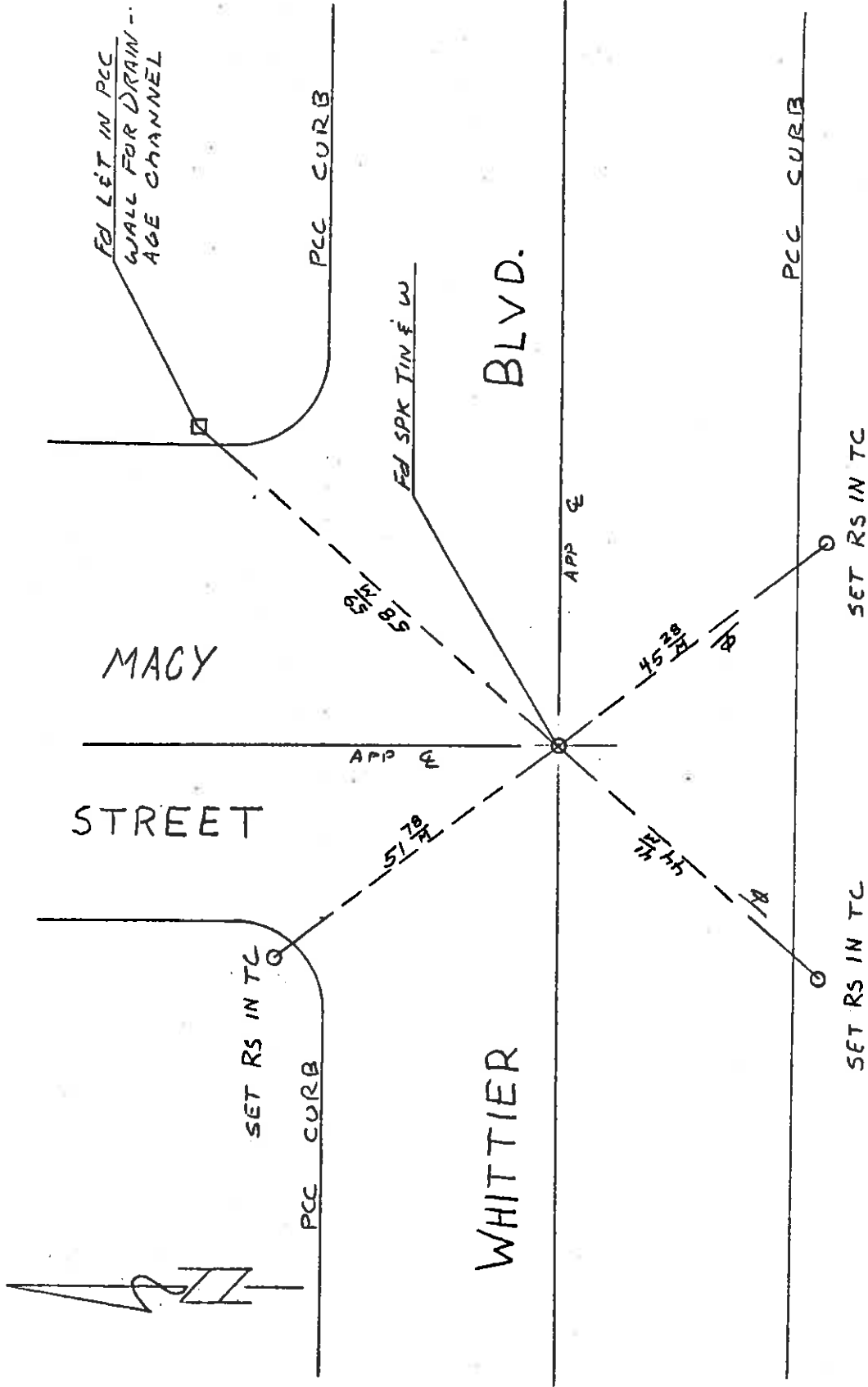
(A)

ORA 72 9.2/11.9  
07212-260231  
SUR. REG # 70-217

TIES @ WHITTIER BLVD &  
MACY STREET

6/22/70  
R. ADAMS & PTY

6 24  
J. WALDROFF



AOR 072C

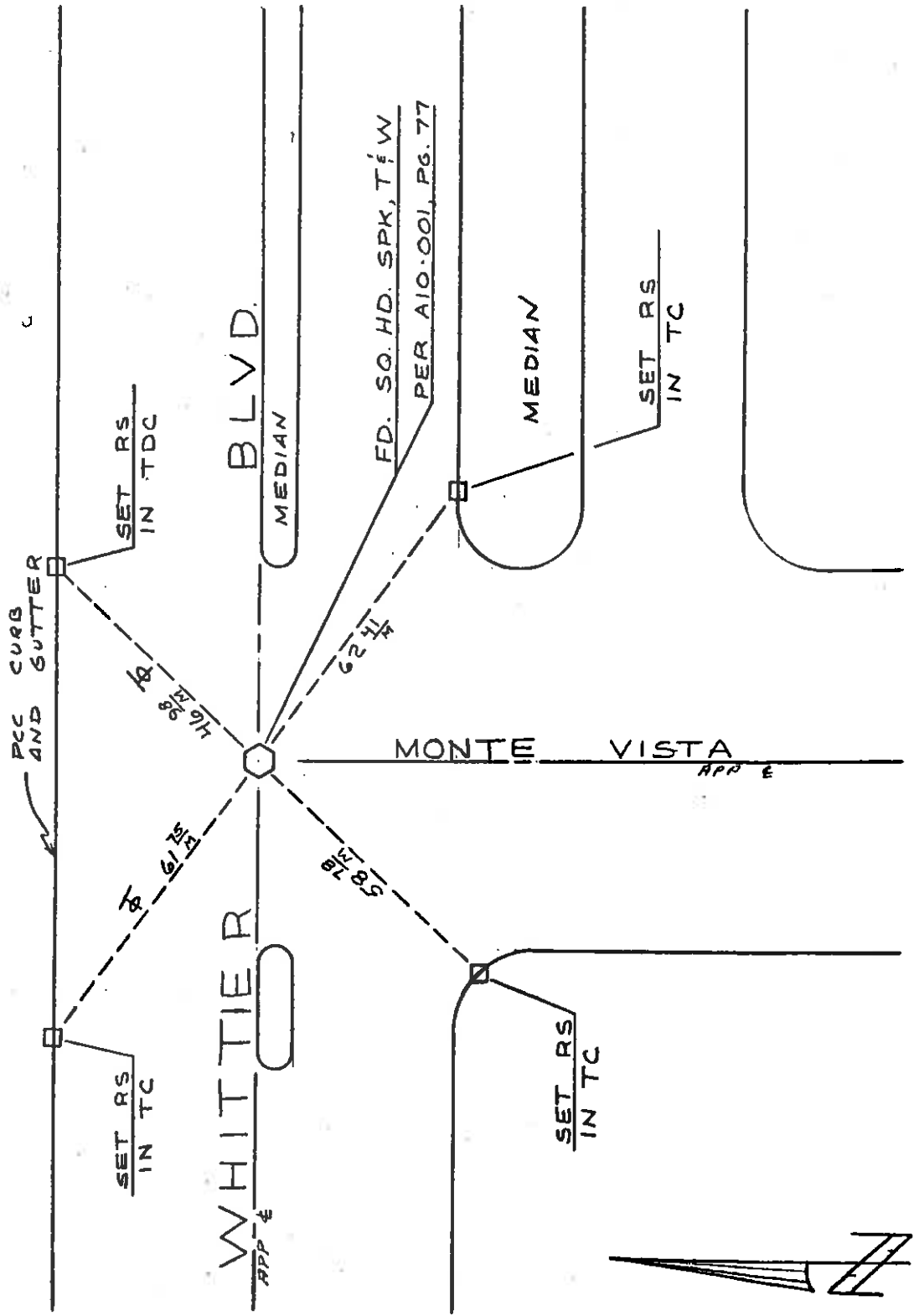
8000

06: 72 9.2/11.9  
07212-260231  
SUR REQ# 70-217

TIES AT  
WHITTIER  
MONTE VISTA

6-23-70  
R.L. ADAMS & PTY.

12 24  
G.A. MANSON





Fd. Bolt: N.W. Cor  
NE 1/4 of NW 1/4  
SEC. 8

CENT

LA HABRA BLVD



N.W. Cor. of NW 1/4  
of SE 1/4 of NW 1/4  
SEC. 8

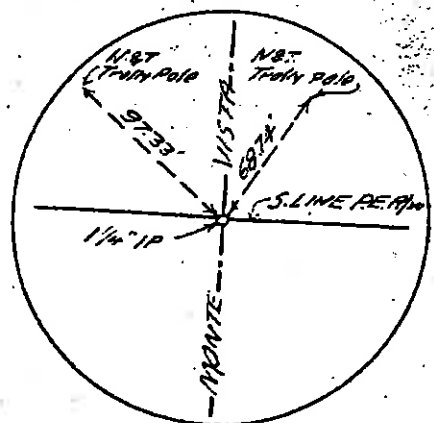
N. 0° 03' 20" W. AVE

PACIFIC

ELECTRIC  
& R/W  
& TRACK

Fd Nail

0+00 20' 20' 0+00



MONTIC VISTA

150.02'

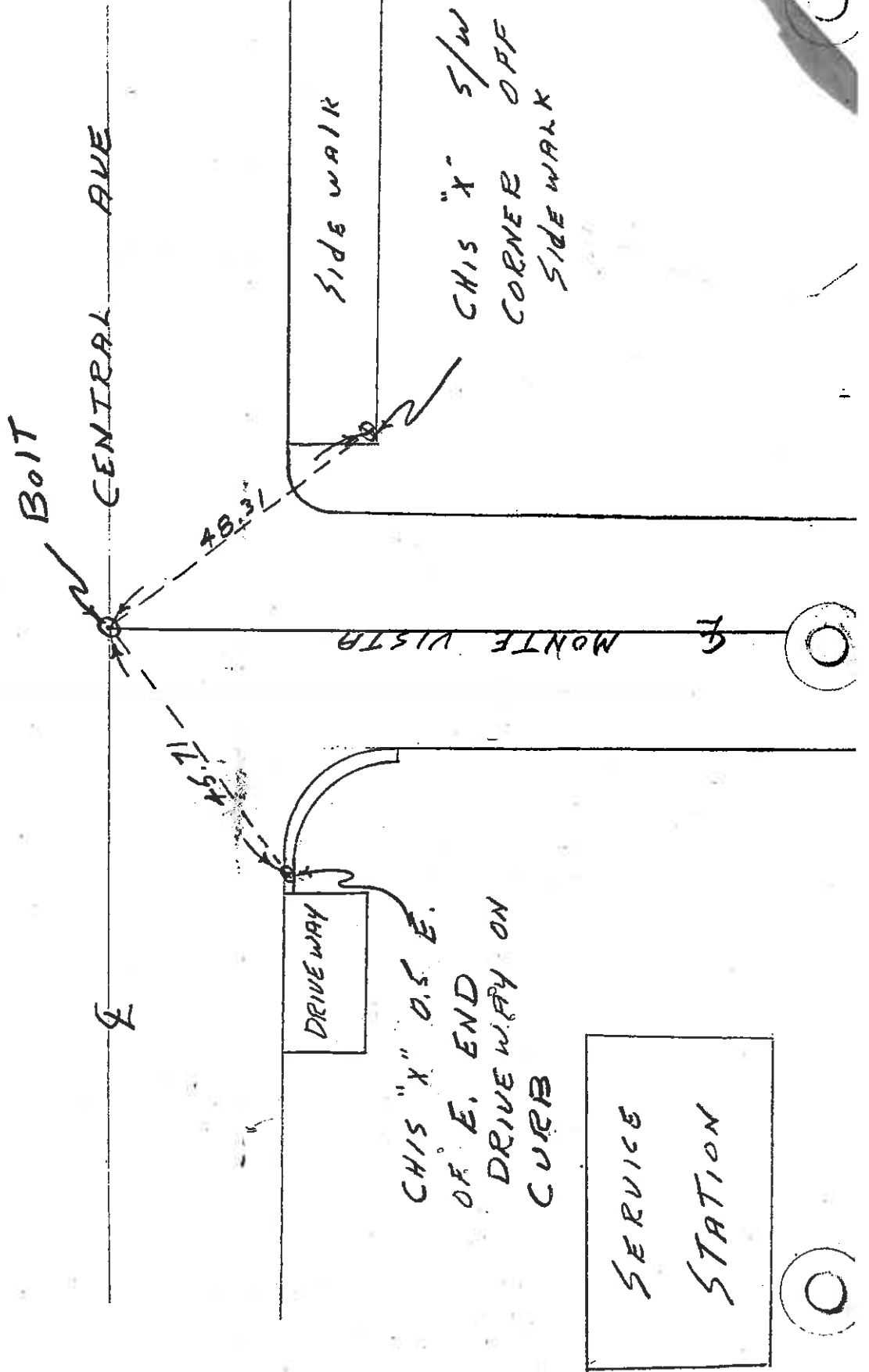
0+20

1+30.02

65611 1959

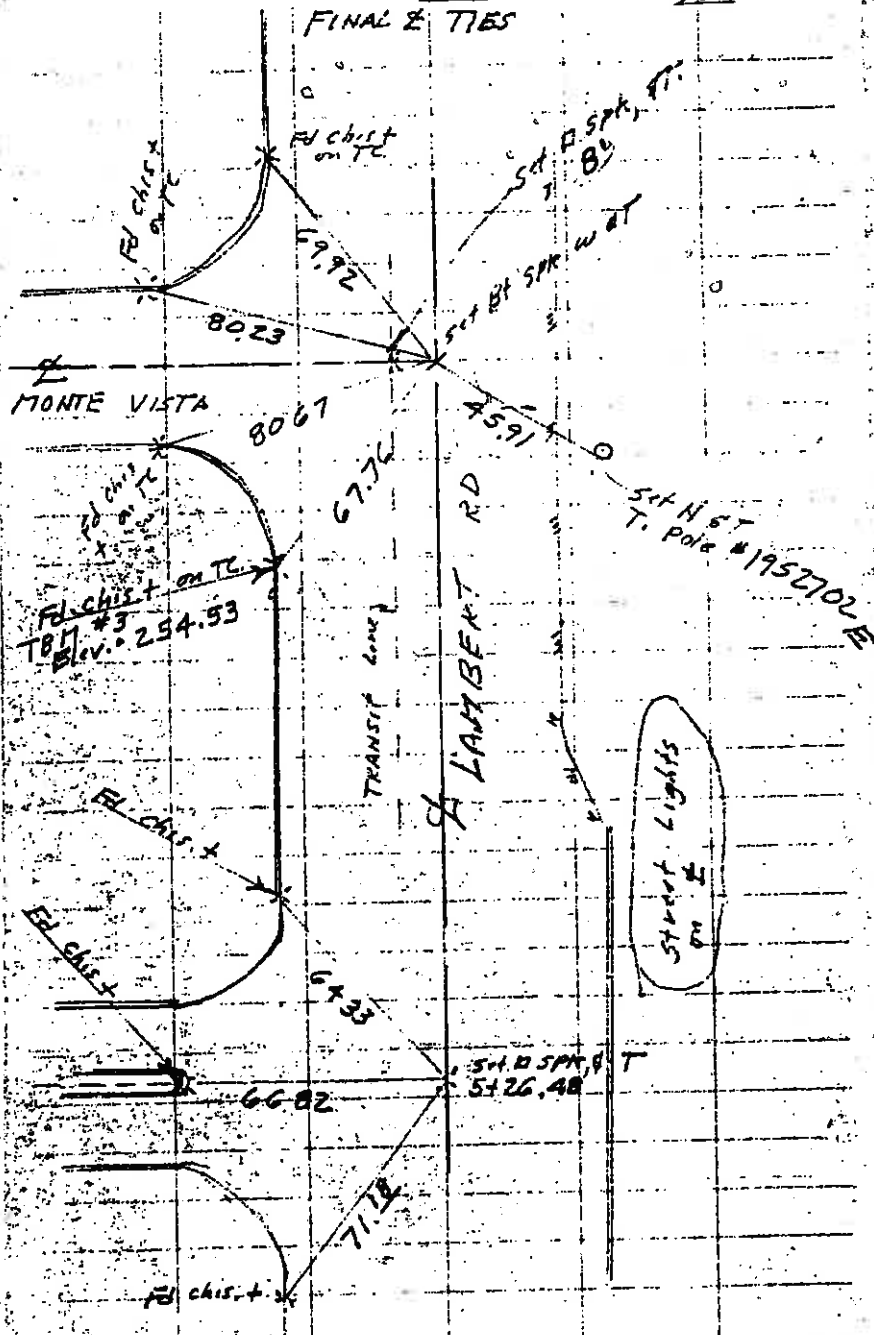


NO SCALE



Job 3493

FINAL TIES



MONTE VISTA

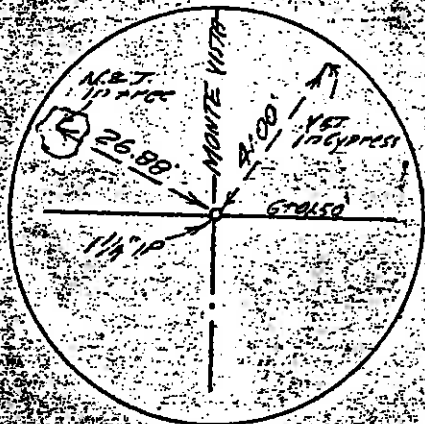
LAMBERT RD

Street Lights on E

FD chis. + on TC  
TBM #3  
Elev. 294.53

ST. N. ST. T. Pole #1952702 E

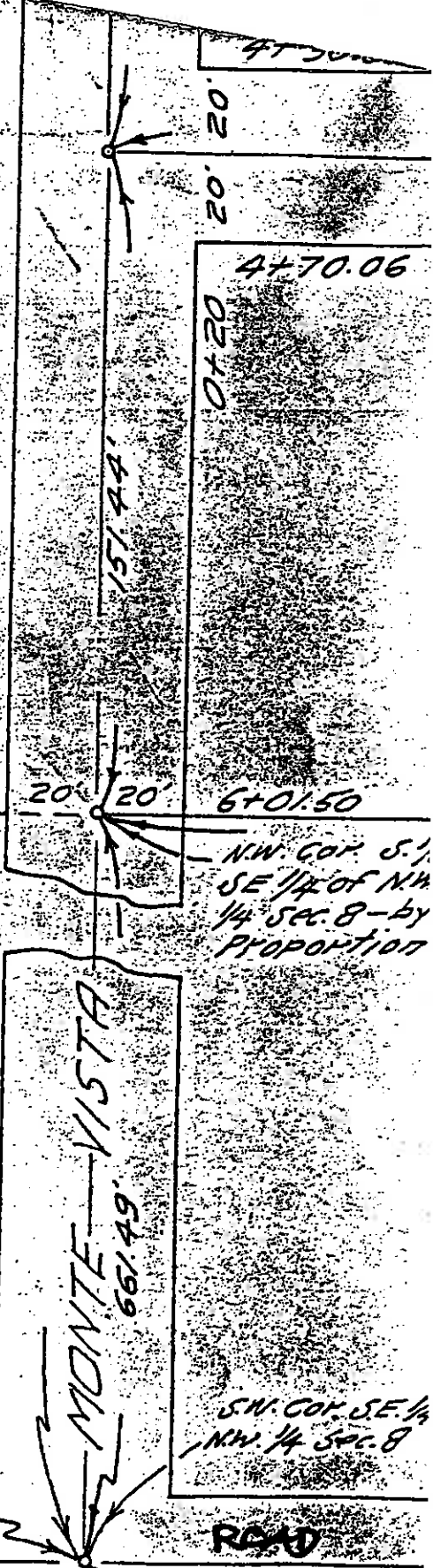
ST. B. SPR. RT.  
51.26.48



AS PER DWS. NO. E-44

Fd. 2" I.P. filled  
with CONC. 12"  
UNDER PER. OCTB.  
61-14

LAMBERT ROAD



MONTE VISTA ST.

1322.99  
300.04

0+20

1+30.02

0+20

1+70.02

0+20

0+20

4+30.06

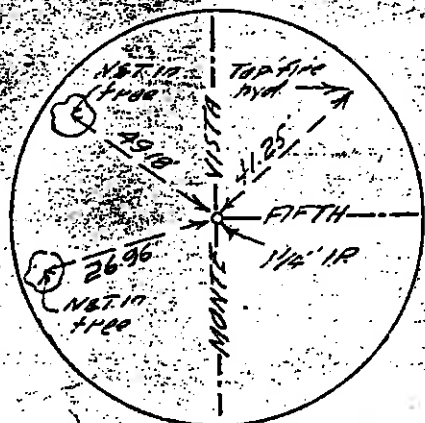
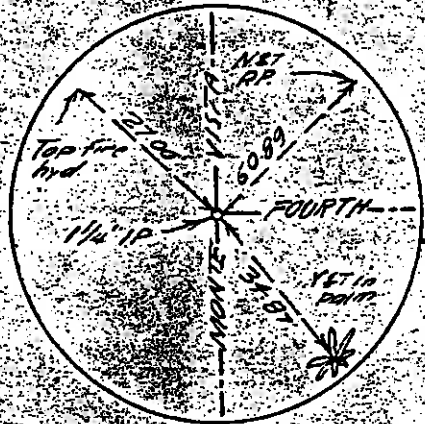
0+20

4+70.06

0+20

FOURTH ST

FIFTH ST



AS PER DWG. NO. E-44